



Cutting-Edge Design and Construction Solutions

Tucker Mechanical utilizes cutting-edge BIM and CAD technology to help projects improve efficiency and safety and achieve greater cost control. BIM allows for integrated project delivery, promoting seamless collaboration across disciplines, from architects and engineers to project managers, contractors, owners, and other project team members.

Advantages of BIM

- > Identify and resolve constructability issues early in project life cycle
- > Optimize prefabrication designs for manufacturability
- > Promote site safety
- > Provide consistent communication and collaboration
- > Maximize end-result accuracy
- > Improve scheduling and work efficiency
- > Visualize various system and equipment options to determine ideal solutions

Strength of a National Leader

As part of EMCOR Group, Tucker Mechanical is backed by a nationwide network of BIM professionals, including more than 200 full-time BIM-enabled mechanical, electrical, and plumbing detailers. With their support we have the technology, experience, and resources to tackle even the most complex BIM projects.

THOUSANDS OF PROJECTS. SEVEN MAJOR MARKETS SERVED.

Biotech/Healthcare

Commercial

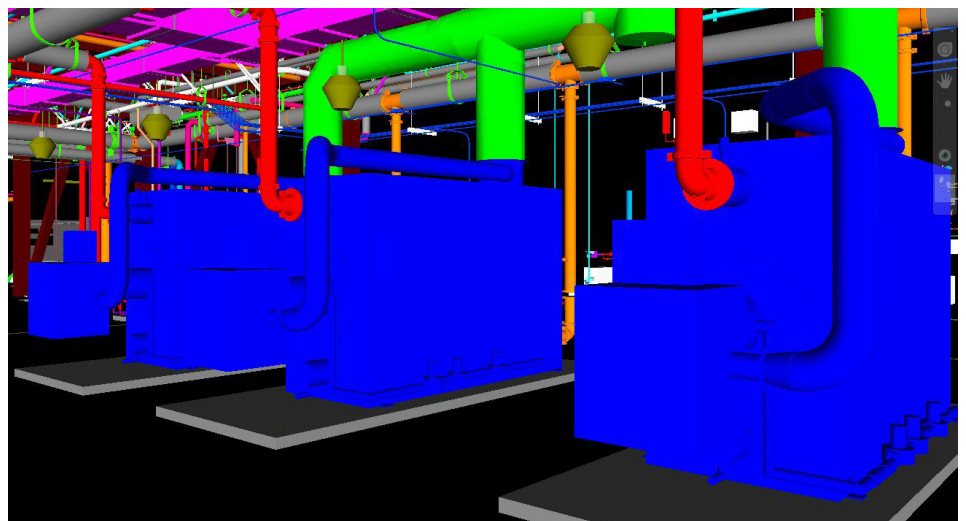
Education

Entertainment/Hospitality

Financial Services

Manufacturing/Industrial

Technology



WHAT CAN WE DO FOR YOU?

Tucker Mechanical
795 Brook Street,
Rocky Hill, CT 06067
T 203.630.7200
tuckermech.com